

PTFE JOINT SEALANT Style No:TPJ

PTFE Joint Sealant is an inorganic sealant for static applications made of 100% PTFE (Teflon). And the tape is with one side adhesive. It has excellent characteristic, Corrosion-resistant, flexible, convenient. It's also used for seals in glass, enamel, flanges etc.

Temperature Limit:

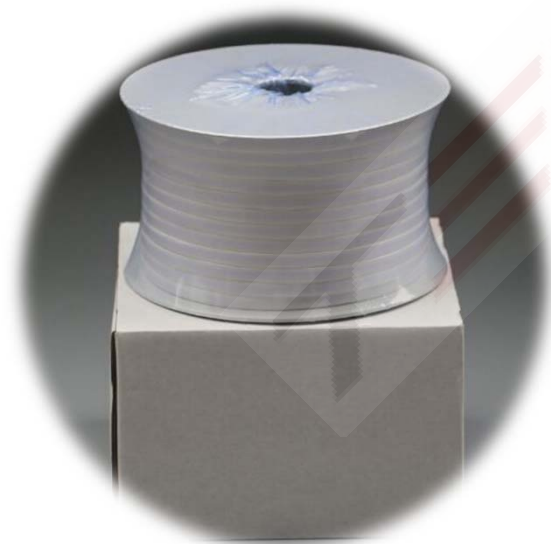
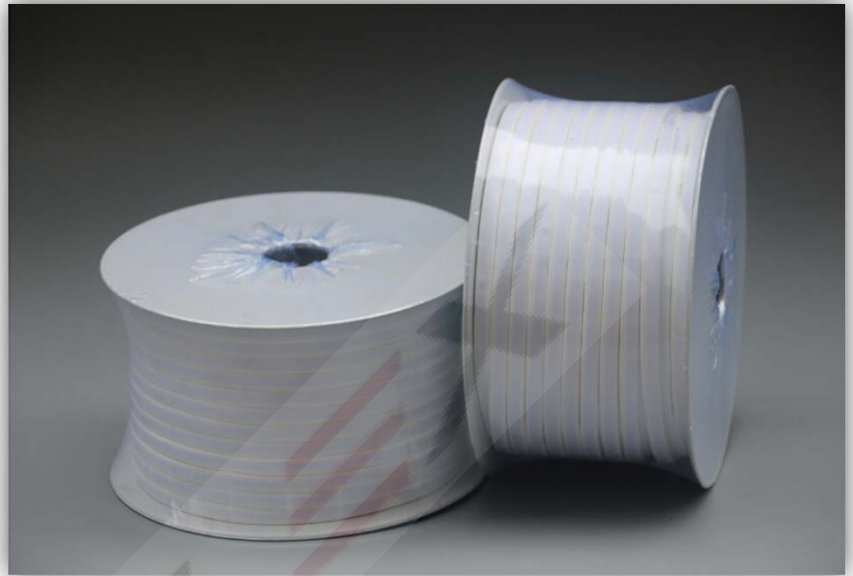
-268°C up to 316°C

Pressure Limit:

Full vacuum up to 3000 psi (210 bar)

Applications:

Fume ducts, steam vessel flanges, concrete lids, manways, glass joints, ceramic joints, heat exchangers, water systems, hydraulic and pneumatic systems, fiberglass reinforced plastic vessels, pump or compressor housing flanges, or practically any other industrial equipment where you require a long-life, trouble-free seal that cuts maintenance costs.



Characteristic

Apparent Density	0.70-1.0g/cm ³
Tensile Strength	≥8.0Mpa
Volatile content	≤1.0%
Hardness	HA 30~70
Creep Relaxation	% ≤40
Working Temperature	-250~260°C
Working Pressure	Gas 1.6 Mpa
	Liquid 6.4Mpa
PH Range	0~14
Moisture Content	≤0.01 %
Melting Point	327°C
Average Particle Size	500µm

Note:

We have different grade of PTFE Joint Sealant as customers request

Grade A: Japanese raw material & 3M adhesive

Grade B: Export to Europe/Japan/North America mainly

Grade C: General grade

General Size

Width(mm)	Thickness(mm)	Length(m)	Width(inch)	Thickness(mm)	Length(ft)
3.0	1.5	30.0	1/8	2	30
3.0	2.0	30.0	1/8	2	50
4.0	2.0	30.0	1/8	2	100
5.0	3.0	25.0	1/8	2	500
5.0	2.0	25.0	3/16	2	30
7.0	2.5	20.0	3/16	2	75
7.0	3.0	20.0	3/16	2	150
8.0	3.0	10.0	3/16	2	500
9.0	4.0	10.0	1/4	3	20
10.0	3.0	20.0	1/4	3	50
10.0	4.0	10.0	1/4	3	100
12.0	4.0	6.0	1/4	3	250
14.0	5.0	6.0	3/8	4	25
16.0	5.0	3.0	3/8	4	50
17.0	6.0	30.0	3/8	4	250
20.0	7.0	30.0	1/2	5	15
22.0	7.0	30.0	1/2	5	30
25.0	8.0	25.0	1/2	5	100
28.0	5.0	25.0	1/2	5	150
30.0	5.0	20.0	5/8	5	15
40.0	4.0	20.0	5/8	5	30
50.0	4.0	10.0	5/8	5	150
60.0	3.0	10.0	3/4	7	15
70.0	3.0	20.0	3/4	7	30
80.0	2.5	10.0	3/4	7	100
100.0	0.4	6.0	1	8	30
100.0	0.5	6.0	1	8	75
100.0	1.0	3.0	1	8	100

Inquiry / Order example

Size	Qty
Grade A, W:3.0mm x T:1.5mm x L: 30.0m	50spools
Grade C, W:1/4' x T:3mm x L: 50'	50spools